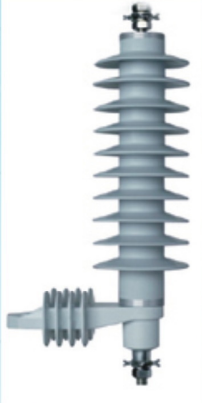



WIDE RANGE OF PRODUCTS AND SERVICE INCLUDE :-

HT & LT POWER CABLE JOINTS, SURGE ARRESTORS, TRAF0 CONNECTORS, HUMAN SAFETY PRODUCTS, CABLE GLANDS, HT TAPE AND TUBES, ELECTRIC HEAT TRACING CABLE, ELECTRIC HEATERS, THERMAL INSULATION, TANKER HEATING SYSTEM, LT CONTROL PANEL SERVICES, TURNKEY SOLUTIONS & much more.....

*Expertise with **Raychem** products for nearly 3 decades....*

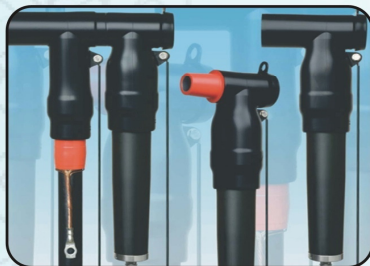
POWER CABLE JOINT & TERMINATION UP TO 245KV	SWITCHGEAR & MOTOR CONNECTION SYSTEM	<ul style="list-style-type: none"> • LIGHTNING ARRISTOR 
GIS Termination Systems	MEDIUM VOLTAGE LINE COVERS	
SURGE ARRESTOR TO 800 KV	COVERED CONDUCTORS	
RAYSULATE INSULATION SYSTEM (Heat Shrinkable Tapes & Sleeves)	CABLE REPAIRS KITS, TIES & CLEATS LINK BOXES UPTO 245 KV	
INSTALLATION & SPLICING TOOLS	FAULTS PASSAGE INDICATORS	SURGE COUNTERS
RAYCHEM HI-VELM ISOLATORS DISCONNECTORS UPTO 1200 KV	CABLE ENTRY SEALING SYSTEM	
TRAF0CONNECTS	LT PANELS	
ELECSAFE PERSONAL & PROTECTIVE EQUIPMENT Insulating Mats, Safety Helmets, Insulated Gloves, Arc Flash Clothing, Eye Wear Protection & much more	MECHANICAL CONNECTORS, AMPACT CONNECTORS, WEDGE CONNECTORS, LV ABC ACCESSORIES & INSULATED CONNECTORS, POLYMERIC INSULATORS & much more ...	



POWER CABLE ACCESSORIES



* INSULATION ENHANCEMENT SYSTEM



SWITCHGEAR & MOTOR CONNECTION SYSTEM



*ELECAFE SAFETY EQUIPMENT

CABLE GLANDS

- Gripwel heavy duty superior quality stainless steel and brass cable gland for reliable and neat termination of cable for hazardous and non hazardous industrial area. A range of Cable Gland accessories include Stopper Plugs, Male/Female Bush, Male female Adaptors, reducers & PVC Shrouds



HEAT TRACE CABLES & ACCESSORIES

WE ARE TEAM OF ENGINEERS TO DESIGN AND INSTALL ALL TYPES OF ELECTRIC HEAT TRACING NAMELY SELF REGULATING, CONSTANT OUTPUT SERIES & PARALLEL, MINERAL INSULATED CABLES, SKIN EFFECT HEAT TRACING AND TANK IMMERSION HEATERS.



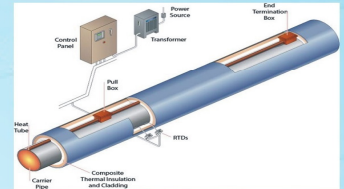
SELF REGULATING
HEAT TRACER



CW SERIES TRACERS



MINERAL INSULATED CABLE



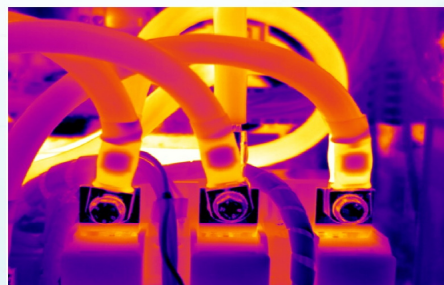
SKIN EFFECT HEAT TRACER

THERMAL INSULATION

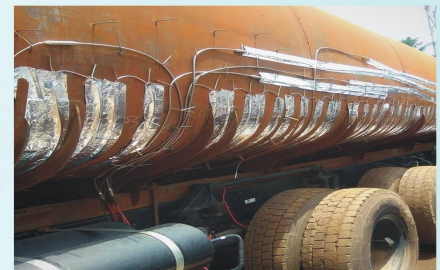
ATP THERMTECH IS A WELL ESTABLISHED ENGINEERING & CONTRACTING COMPANY FOR PROVIDING SPECIALIZED SERVICES IN THERMAL INSULATION & ALLIED APPLICATIONS.

OUR COMPETENCE INCLUDES DESIGN, ENGINEERING, THERMAL CALCULATIONS, SUPPLYING QUALITY MATERIALS, INSTALLATION COMMISSIONING & GUARANTEED PERFORMANCE OF OUR SERVICES.

- HOT INSULATION
- COLD INSULATION
- ACCOUSTIC INSULATION
- WRAPPING AND COATING OF PIPES
- TANKER HEATING SYSTEM
- TECHNICAL ADVICE
- SITE VISIT
- GATHERING OF DATA
- TECHNICAL SPECIFICATION SUPPORT
- THERMOGRAPHY



THERMOGRAPHY



For further information, please contacts us

ATP THERMTECH PVT. LTD.

R-15, Ritu Complex, Main Market, Shakarpur, Delhi - 110092 (INDIA)

Phone : +91 1142401674

E-Mail: sales@atpindia.net, info@atpindia.net, Website : www.atpthermtech.com